

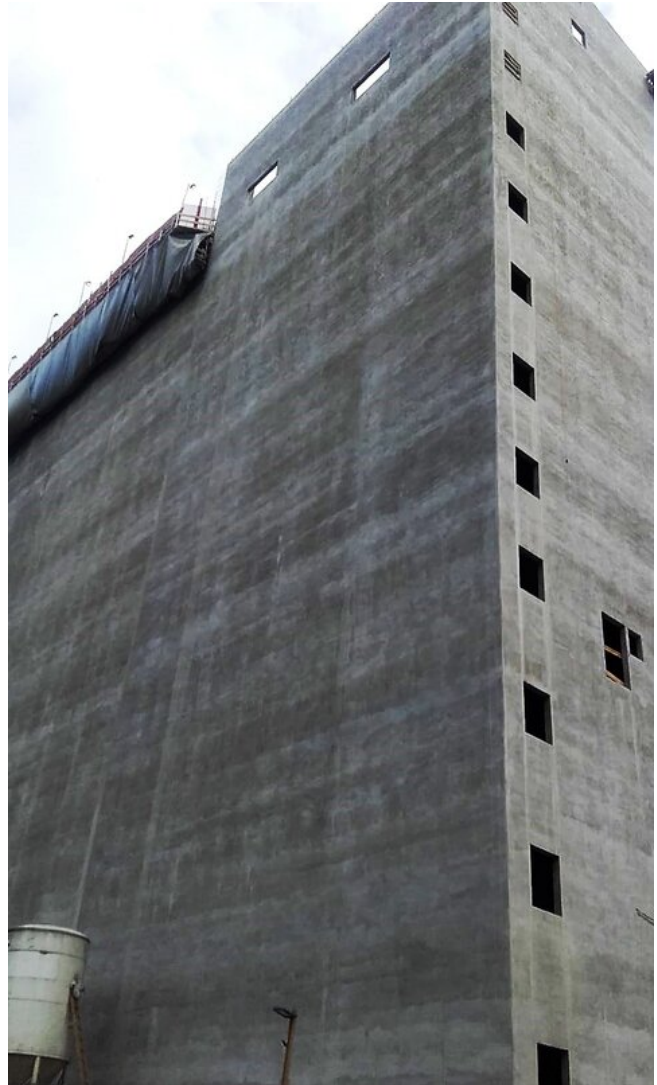
Silos

Slipforming

Multi-cell silos

# Biosilo Gsellmann

AUSTRIA 2018



Location	Austria
Construction Time	2018
Height	49.4 m
Wall thickness	0.2 m
Formwork runmeter	317 m / 313 m
Total Surface Area	26,800 m <sup>2</sup>
Total Concrete Volume	3,000 m <sup>3</sup>



[www.gleitbau.com](http://www.gleitbau.com)



**Outstanding solutions  
in formwork  
engineering**

**Itzlinger Hauptstraße  
105**

**5020 Salzburg, Austria**

T +43 662 42 04 52

F +43 662 42 04 58

office@gleitbau.com

[www.gleitbau.com](http://www.gleitbau.com)