

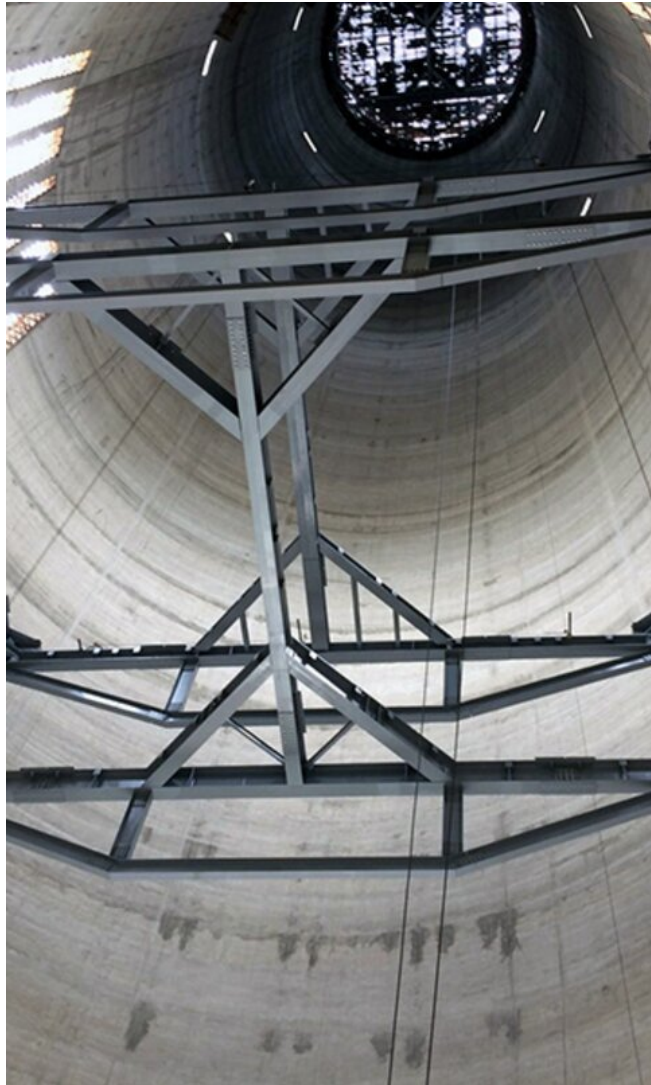
Chimneys

Heavy lifting

Heavy lifting

Chimney Jimah

MALAYSIA 2016 - 2017



Location

Malaysia

Construction Time

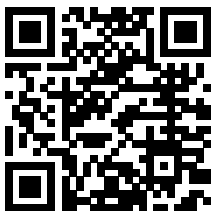
2016 - 2017

Lifting of the platforms and liner

Lifting Height: 150,00 m / Liner: 156,00 m

Lifting Weight of platforms: 2 x 24,00 t + 1 x 60,00 t

Liner: 2 x 230,00 t



www.gleitbau.com

**Outstanding solutions
in formwork
engineering**

**Itzlinger Hauptstraße
105**

5020 Salzburg, Austria

T +43 662 42 04 52

F +43 662 42 04 58

office@gleitbau.com

www.gleitbau.com