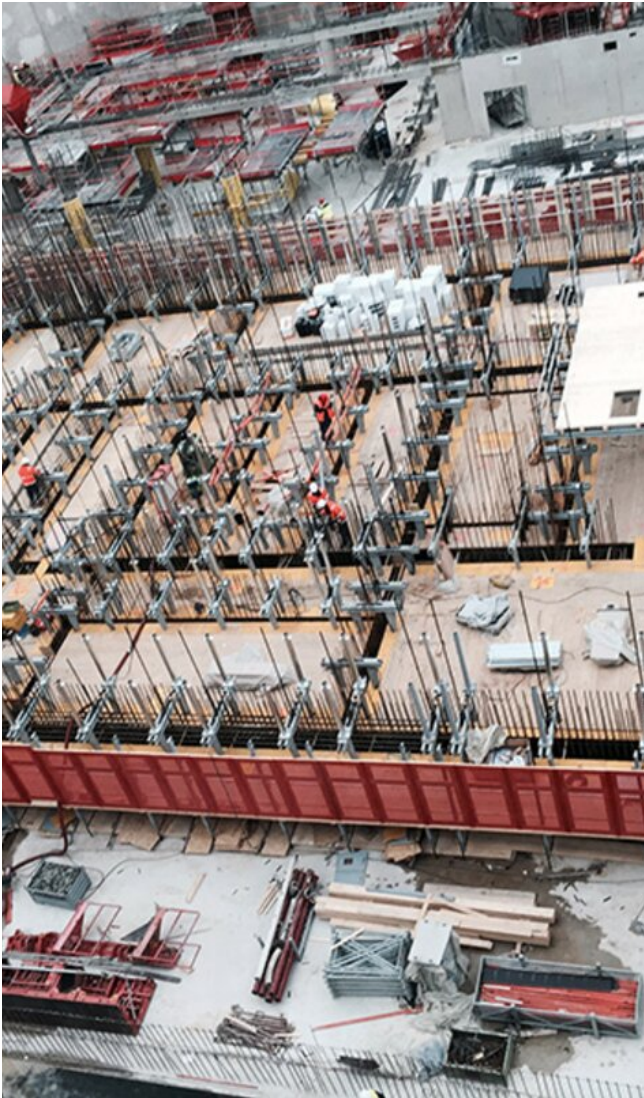


# High-Rise Cores

## Nouveau Palais de Justice

FRANCE 2014 - 2015



Location	France
Construction Time	2014 - 2015
Outer Dimension	33 m x 22.9 m x 161 m
Outer Dimension	22.9 m x 1,680 m x 118 m



**Outstanding solutions  
in formwork  
engineering**

**Itzlinger Hauptstraße  
105**

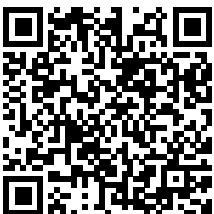
**5020 Salzburg, Austria**

T +43 662 42 04 52

F +43 662 42 04 58

office@gleitbau.com

[www.gleitbau.com](http://www.gleitbau.com)



[www.gleitbau.com](http://www.gleitbau.com)