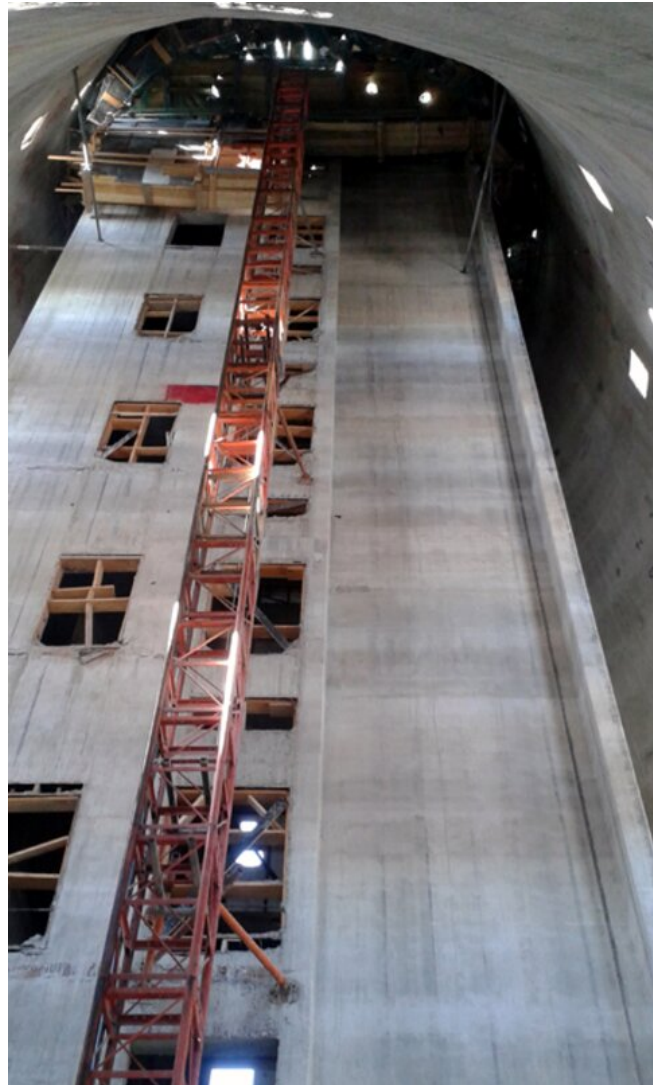


# Ben Gurion Airport Tower

ISRAEL 2013



Location	Israel
Construction Time	2013
Height	90 m
Start-Diameter	22 m
End-Diameter	13 m
Total Surface Area	20,190 m <sup>2</sup>



**Outstanding solutions  
in formwork  
engineering**

**Itzlinger Hauptstraße  
105**

**5020 Salzburg, Austria**

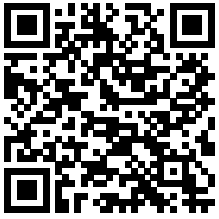
T +43 662 42 04 52

F +43 662 42 04 58

office@gleitbau.com

[www.gleitbau.com](http://www.gleitbau.com)

The staircore inside the tower was slipformed simultaneously



[www.gleitbau.com](http://www.gleitbau.com)



**Outstanding solutions  
in formwork  
engineering**

**Itzlinger Hauptstraße  
105**

**5020 Salzburg, Austria**

T +43 662 42 04 52

F +43 662 42 04 58

[office@gleitbau.com](mailto:office@gleitbau.com)

[www.gleitbau.com](http://www.gleitbau.com)