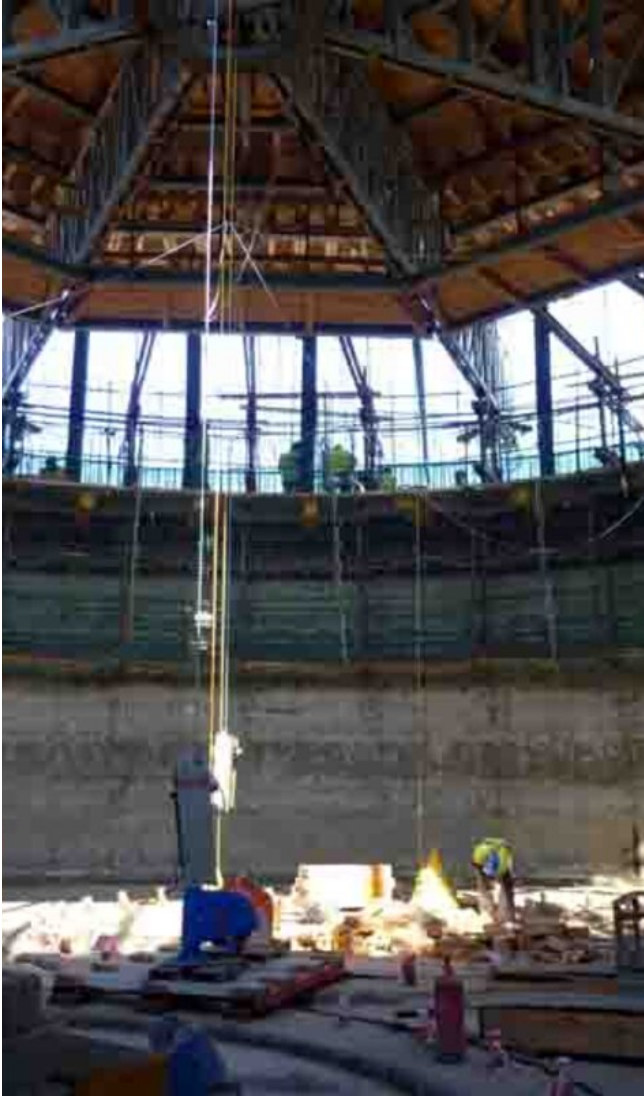


Chimneys

Conical Slipforming

Heavy lifting

Conical Chimney Rabigh



Location	Saudi Arabia
Construction Time	2011 - 2012
Start-Diameter	25.2 m
End-Diameter	18.8 m
Start-Wall thickness	0.6 m
End-Wall Thickness	0.5 m
Total Surface Area	23,640 m ²



**Outstanding solutions
in formwork
engineering**

**Itzlinger Hauptstraße
105**

5020 Salzburg, Austria

T +43 662 42 04 52

F +43 662 42 04 58

office@gleitbau.com

www.gleitbau.com



www.gleitbau.com



**Outstanding solutions
in formwork
engineering**

**Itzlinger Hauptstraße
105**

5020 Salzburg, Austria

T +43 662 42 04 52

F +43 662 42 04 58

office@gleitbau.com

www.gleitbau.com