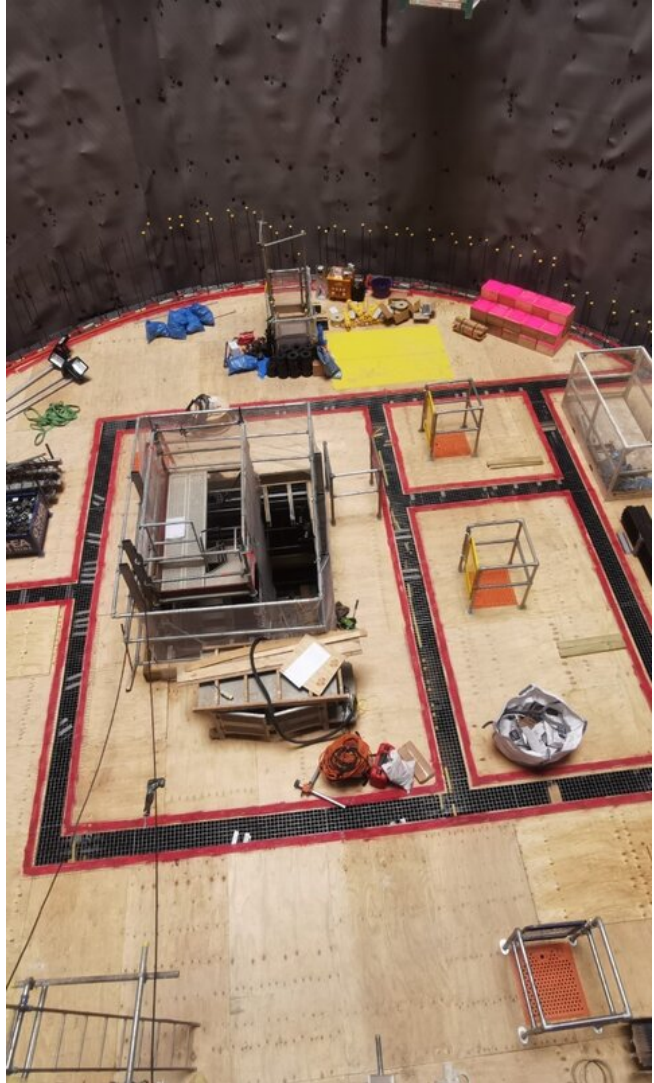
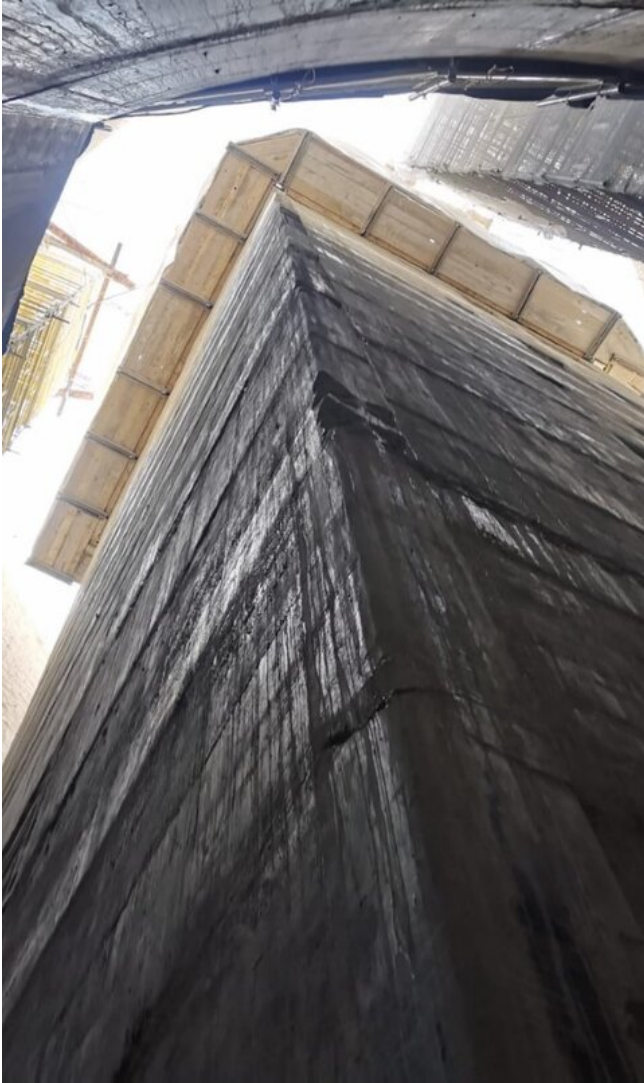


Shafts HS 2



Location	United Kingdom
Construction Time	2022 - 2023
Total Surface Area	11,200 m ²

Execution of 3 shafts with varying heights



www.gleitbau.com



**Outstanding solutions
in formwork
engineering**

**Itzlinger Hauptstraße
105**

5020 Salzburg, Austria

T +43 662 42 04 52

F +43 662 42 04 58

office@gleitbau.com

www.gleitbau.com