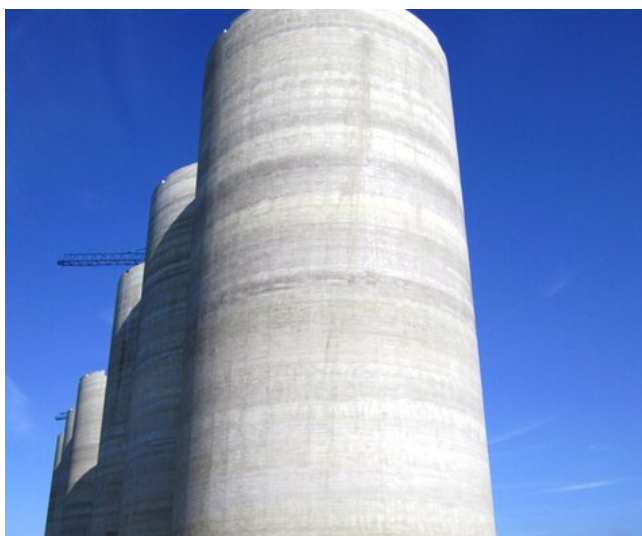
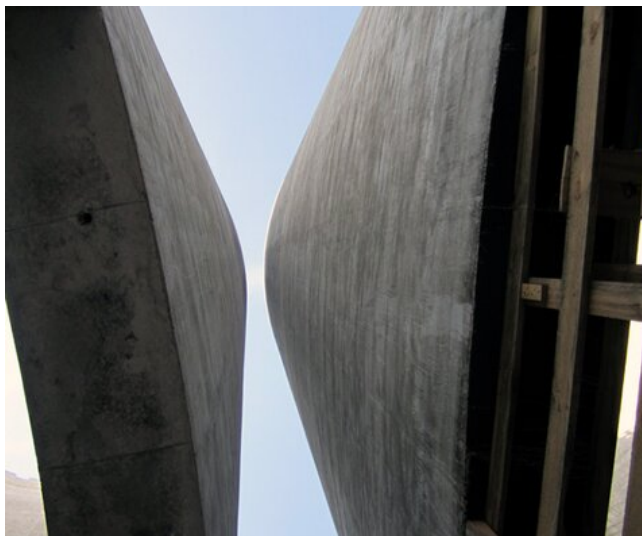


Silos

Coffrage glissant

EON Maasvlakte

PAYS-BAS 2010



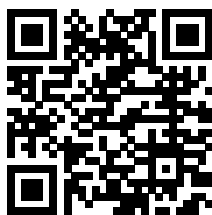
Lieu de construction	Pays-Bas
Durée de construction	2010
Hauteur	55 m
Diamètre début	25 m
Surface totale	8 639 m ²



**Outstanding solutions
in formwork
engineering**

**Itzlinger Hauptstraße
105
5020 Salzburg,
Autriche**

T +43 662 42 04 52
F +43 662 42 04 58
office@gleitbau.com
www.gleitbau.com



www.gleitbau.com