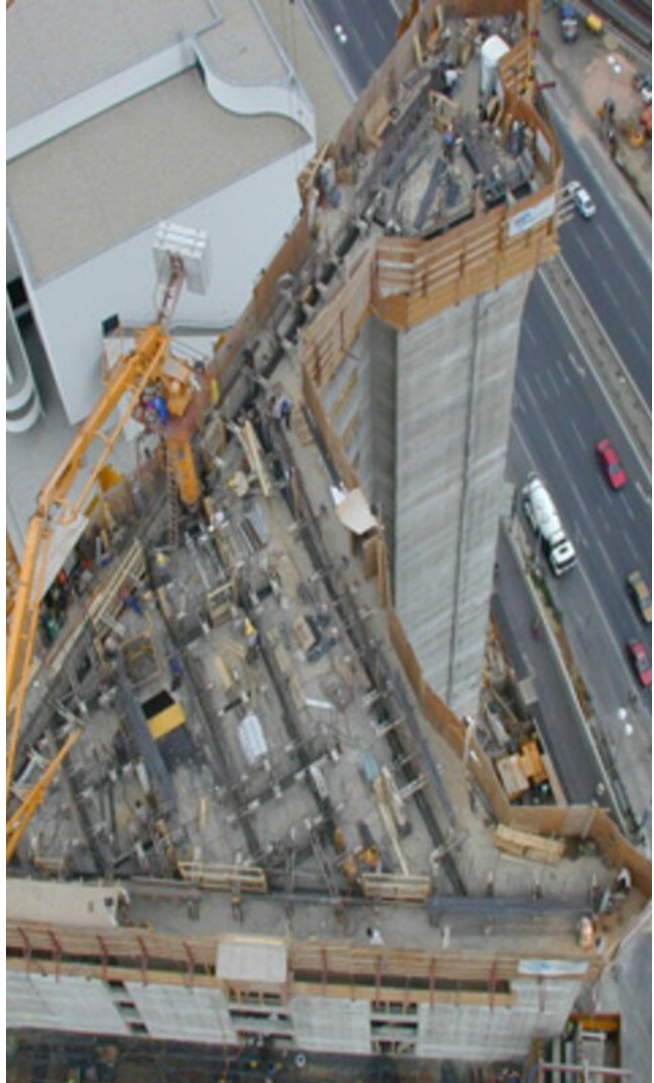


Tour « Neue Donau »



AUTRICHE 2000

Lieu de construction	Autriche
Durée de construction	2000
Surface totale	40 500 m ²

Total 34 floors – high density concrete.
2 Basements – entresol B500, 1st – 16th floor B400, 17th – 34th floor B300.

Height: 112 m



Gleitbau Salzburg

**Outstanding solutions
in formwork
engineering**

**Itzlinger Hauptstraße
105
5020 Salzburg,
Autriche**

T +43 662 42 04 52

F +43 662 42 04 58

office@gleitbau.com

www.gleitbau.com



www.gleitbau.com